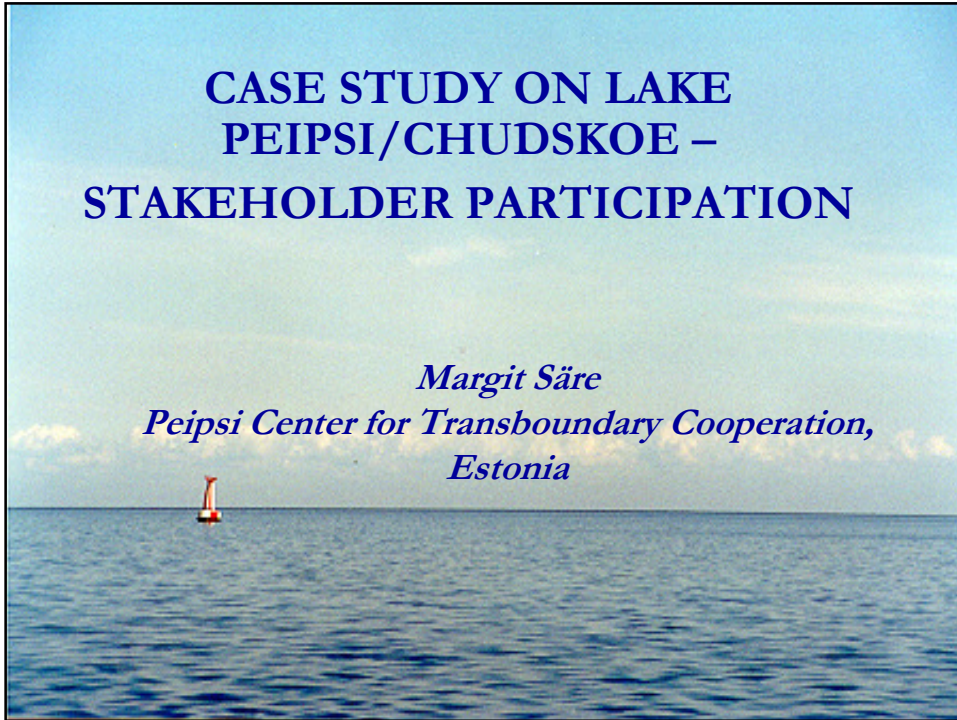


CASE STUDY ON LAKE PEIPSI/CHUDSKOE – STAKEHOLDER PARTICIPATION

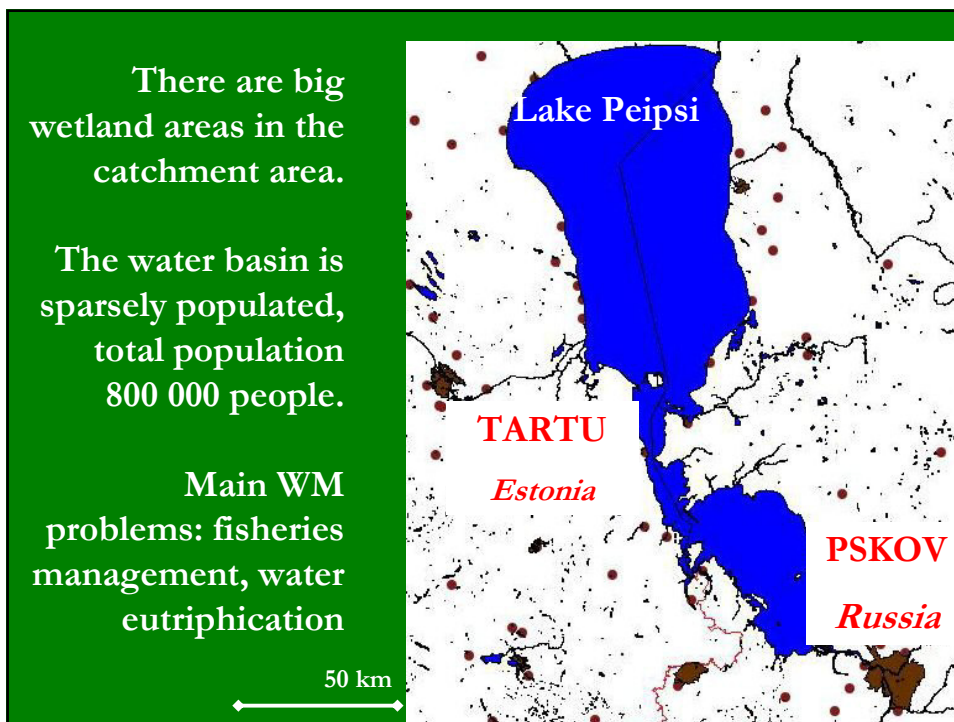
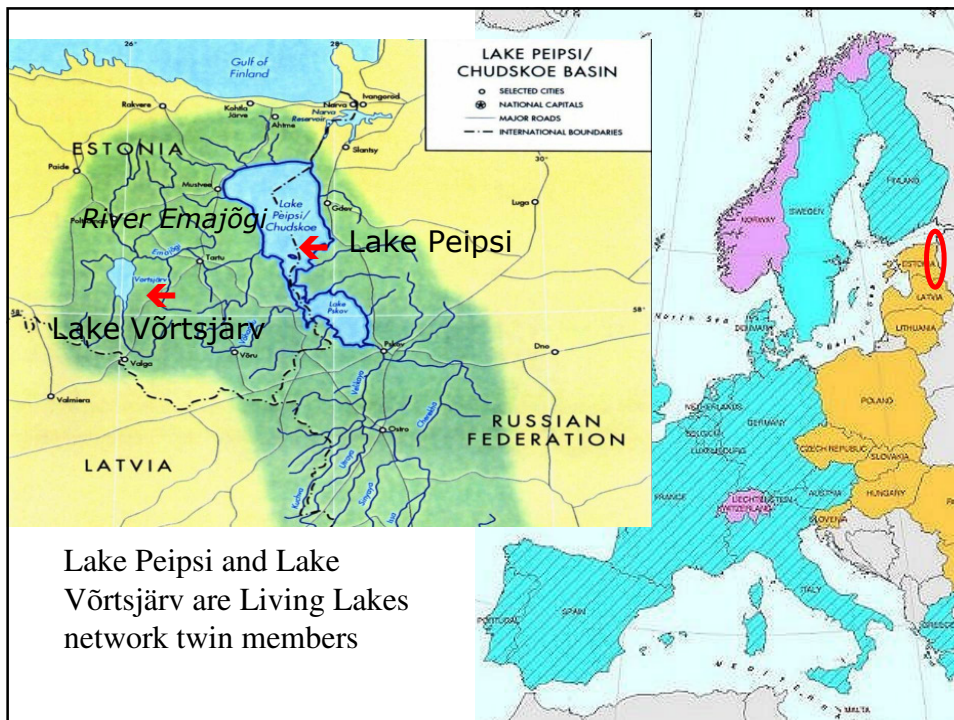
*Margit Säre
Peipsi Center for Transboundary Cooperation,
Estonia*



www.ctc.ee

Peipsi CTC is aiming to promote sustainable development and cross border cooperation in the Lake Peipsi basin and sharing its experience with the other transboundary water regions

We work since 1993 and have offices in Estonia and Russia



-Most of local authorities in the region are small and are located in rural areas

-Rich of cultural and historical heritage



Challenges

Lake Peipsi region is quite big in territory (3555 km²) ; it borders 4 different counties in EE, 4 regions in RUS; less than 100 000 inhabitants.

Difficult to involve all different stakeholders

By natural, socio-economic, demography, development characteristics it is rather homogeneous region.

Peipsi region municipalities share common problems, which are different of those in county centers. All these municipalities are below average in income, living standard characteristics. All of them see their development possibilities connected with the lake, fishing, SME development, tourism and organic farming.



Lake Peipsi Water Management

- During UNDP/GEF funded project(2004-2006) Lake Peipsi Water Management Programme was worked out but is not implemented.

- Estonian side is implementing East Estonia WMP (in accordance with EU WFD) and Russian side their plans according to their Water Act.

- In stakeholder participation challenge: stakeholder involvement in national, transboundary level and have interests of different sides take into account

I NATIONAL, REGIONAL LEVEL

Most important/active groups

Fisheries Development Agencies

- ..promote the sustainable development of 8 fisheries areas in Estonia (incl Lake Peipsi and Võrsjärv)
- contributing to the creation of a favourable and balanced fisheries environment in Estonia. - work not only directly with fishery sector but also other local development issues
- Grant programs (to support realisation of their Strategy)
- Involvement of different stakeholders in lake area development
- One area for whole Lake Peipsi!

- EU LEADER local action groups

Stakeholder involvement in trasboundary level

- It is transboundary lake on EU external border
- Visa regime
- No crossing on water body
- Language issues
- No joint regulary meeting development body for the whole lake area nor development plan

Estonian-Russian Transboundary Water commission (1997)

2 Working groups:

Integrated Water resources management

Monitoring and assessment

Different stakeholder groups, incl. Peipsi CTC are invited to participate in the work of WGs



EXAMPLE: Development of Water tourism

Project idea on opening Lake Peipsi to Gulf of Finland as been discussed already decades.

Different opinions inside country and even more opposing ideas with Russian partners

Russian side is more interested in cruise trios/big ports;

Estonian side small ports, Yachts

Project will be developed to ENPI program, with participation of universities, local and regional authorities, NGOs

Challenges

Experts produce a highly technical body of information that becomes incomprehensible to non-experts;

Large territories of lake basins - it is difficult to involve local stakeholders if no sufficient resources

Specific issues for the EU external borders is a growing gap in the formal frameworks, norms, standards, practices, and information, economic development levels between different sides of the border.

Peipsi CTC Public participation activities

- Environmental education curricular for schools
- Lake Peipsi tabel game for children
- Lake Peipsi museum
- Yearly "Peipsi Forum" – multi-stakeholder conference

- Public information through local media, water seminars, brochures on WMP and water issues

Scientific projects: Testing innovative public participation methods: citizen juries, focus groups